

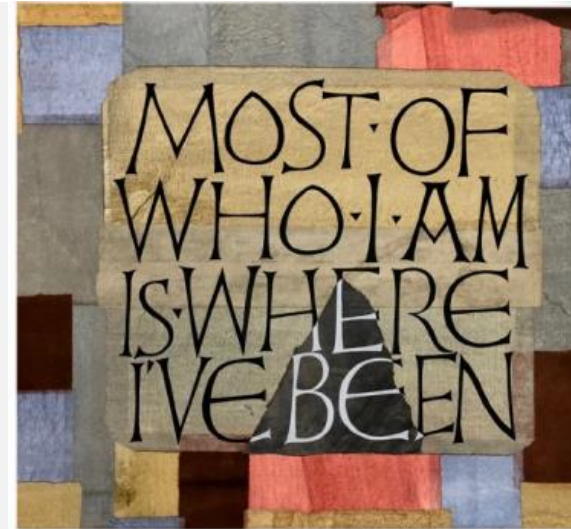
WOC

Write on Calligraphers

# Slow and Steady

With Amity Parks

There are times when our lettering calls for a new way of working to achieve the effect we are looking for. Sometimes our traditional pens don't work to create the forms we want, or we are lettering on a surface that is not friendly to the pen. Other times we would like to use a medium that won't flow through are pens. In these cases, it's nice to have the skills for "drawing" our lettering using a pointed brush. This tool allows unlimited freedom to produce any letterforms and to write on many surfaces.



In this class we will do exercises to familiarize ourselves and develop skills with using a pointed brush. We won't be 'writing' with the brush as many calligraphers do, but rather drawing and painting with it. This is a slow and steady process that is a good skill to have in your tool kit. Once we are comfortable with the tools, we'll explore a variety of letterforms that lend themselves well to these techniques such as Roman caps and a more playful and naïve version of caps inspired by old Italian inscriptions. Next, we will experiment with creating interesting compositions and adding other illustrative designs as well. I'll offer some tips in how to transfer our designs onto surfaces using patterns, and then finishing our designs using our pointed brush and water-based paints such as gouache and watercolor.

Amity Parks is an artist and calligrapher living in Missoula, Montana. For many years she has been studying calligraphy in weeklong and private tuition classes with internationally renowned instructors. She holds a Bachelor of Fine Arts degree from the University of Tulsa, and a Master of Fine Arts degree from the University of Montana. Her work has been featured in national and regional exhibits and publications. She has been a long-term active member and teacher in her local and state calligraphy guilds and travels within the US and internationally to teach workshops, including serving of the faculty for multiple International Lettering Arts Conferences. Amity's website is [www.amityparkslettering.com](http://www.amityparkslettering.com).

May 1<sup>st</sup> and 2<sup>nd</sup>, 2022, 9:30AM to 4:30PM

This workshop with Amity will be on Zoom.

\$110.00 for WOC members; \$140.00 for Non-Members. Canadians, please pay in U.S. funds. Canadians not WOC members please pay \$145.00 in U.S. funds.

**Mail on or after March 21st, 2022. Early registration will go to the bottom of the inkwell.**

Confirmation will be sent via email. Priority will be given to WOC Members.

Pay online with PayPal ([writeoncalligraphers@gmail.com](mailto:writeoncalligraphers@gmail.com)) or make check payable to WOC and send with registration form to (checks are preferred):

WOC Workshop, c/o Sue Gruhn, 14253 92<sup>nd</sup> Place NE, Kirkland, WA 98034-5149

Refund Policy: Full refunds will be given on (1) month in advance of a workshop. No refunds less than two (2) weeks before the workshop, unless the spot can be filled from the waiting list. All refunds are subject to a \$10.00 administration fee. Questions: contact Sue Gruhn at [sps1200@frontier.com](mailto:sps1200@frontier.com).

Name: \_\_\_\_\_

Address: \_\_\_\_\_

Email: \_\_\_\_\_ 10-Digit Phone No: \_\_\_\_\_